



# WHICH FIN IS USED TO SWIM?

Conclusions of fin use are drawn from observations of fish



## GRADE 4

### KEY WORDS

- pectoral fin
- dorsal fin
- caudal fin
- pelvic fin
- anal fin

### STANDARDS

- SCI.4.3.3

### OBJECTIVES

- Students will observe fish and draw conclusions about the uses of fins.

### BACKGROUND INFORMATION

- Fish use their fins to move through water, but different fish have different primary fins to do so.
- Tropical fish are unique and beautiful due to their vast diversity, which can be observed in their fins: some may be exaggerated and elaborate while others are tiny and hard to see.

### PROCEDURE

- Have students observe 10 different fish.
- Using the worksheet, have students record how many times they observe a specific fin being used as the primary fin.

### RECOMMENDED ASSESSMENT

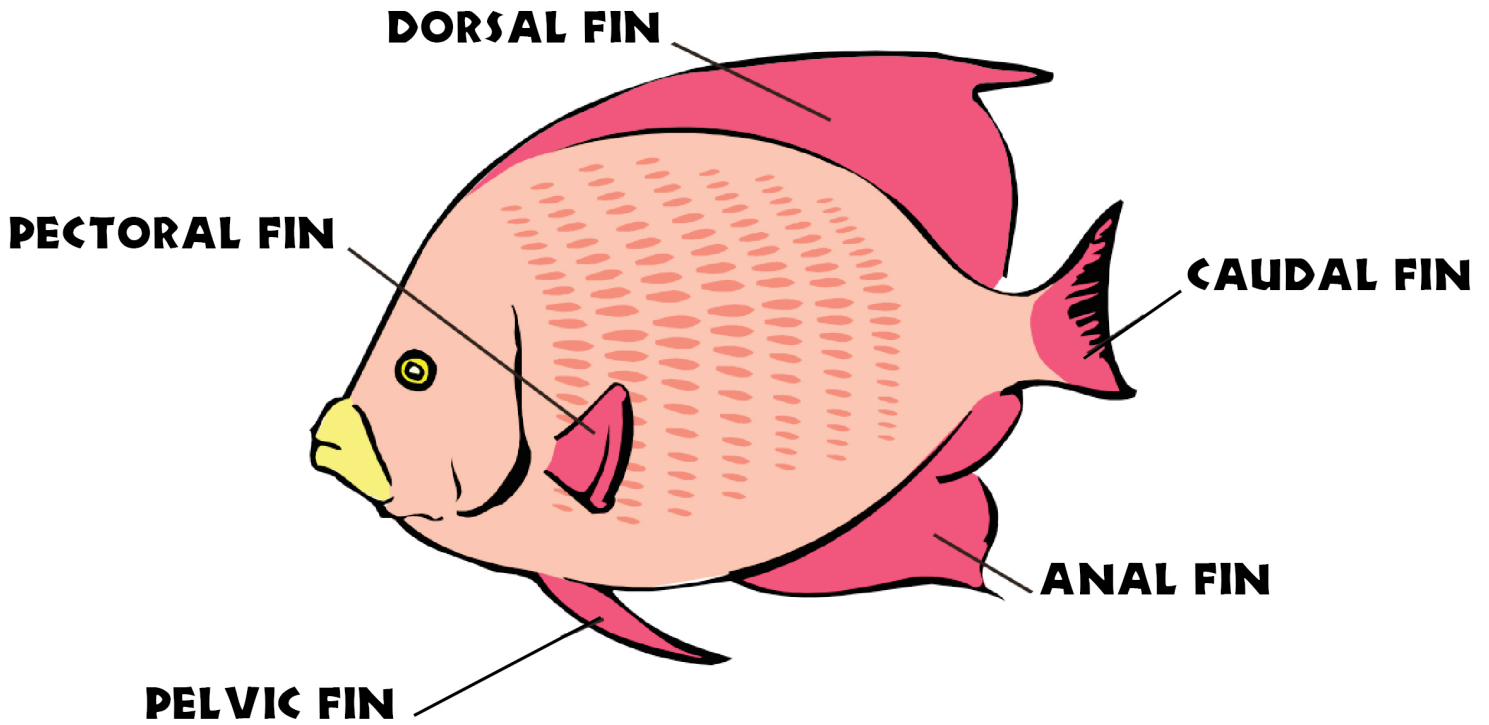
- Have students discuss the frequency of each type of fin as the primary fin.



# WHICH FIN IS USED TO SWIM

Choose 10 fish to observe. Record how many times you see a specific fin being used as the primary fin.

Name \_\_\_\_\_



PECTORAL FIN	DORSAL FIN	CAUDAL FIN	PELVIC FIN	ANAL FIN