



# WHAT IS A REPTILE?

Examine pictures and determine what constitutes a reptile



## GRADE 2

### MATERIALS

- glue
- scissors

### KEY WORDS

- cold-blooded
- reptile
- vertebrate

### STANDARDS

- SCI.2.3.2

### OBJECTIVES

- Students will learn that reptiles are a class of animals sharing certain characteristics. They have dry, scaly skin; are cold-blooded; are vertebrates; and lay eggs with a leathery shell.

### BACKGROUND INFORMATION

- All reptiles are vertebrates, breathe with lungs, and have dry, scaly skin.
- Reptiles lay eggs that have a dry leathery shell. Unlike amphibians, which lay eggs with a jelly coat that must remain in water, reptiles are less dependent on water.
- Basic Reptile Types
  - Turtles are the only reptiles that have their “houses” on their backs.
  - Lizards have visible, moving eyelids, limbs, and an ear opening on each side of their head.
  - Snakes lack limbs, eyelids, and ear openings.
  - Crocodylians include alligators, as well as crocodiles. They are the most ancestral of the reptiles.

### PROCEDURE

- Activity 1 - Have students circle the animals that are reptiles.
- Activity 2 - Have students cut and paste pictures of reptiles into the correct category (turtle, snake, lizard, crocodylian).

### RECOMMENDED ASSESSMENT

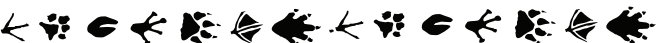
- Have students compare their answers in a large group and defend their answers if there is disagreement.

### EXTENSIONS

- Have students read about crocodiles and alligators, turtles and tortoises, or lizards and snakes. Then have them find similarities and differences between the pairs of reptiles.
- Collect pictures of snakes, lizards, turtles, alligators, and crocodiles. Label and place the pictures on the bulletin board.
- Talk about how dinosaurs are reptiles too. Look for our dinosaur activities at the zoo.

### TEACHER HINTS

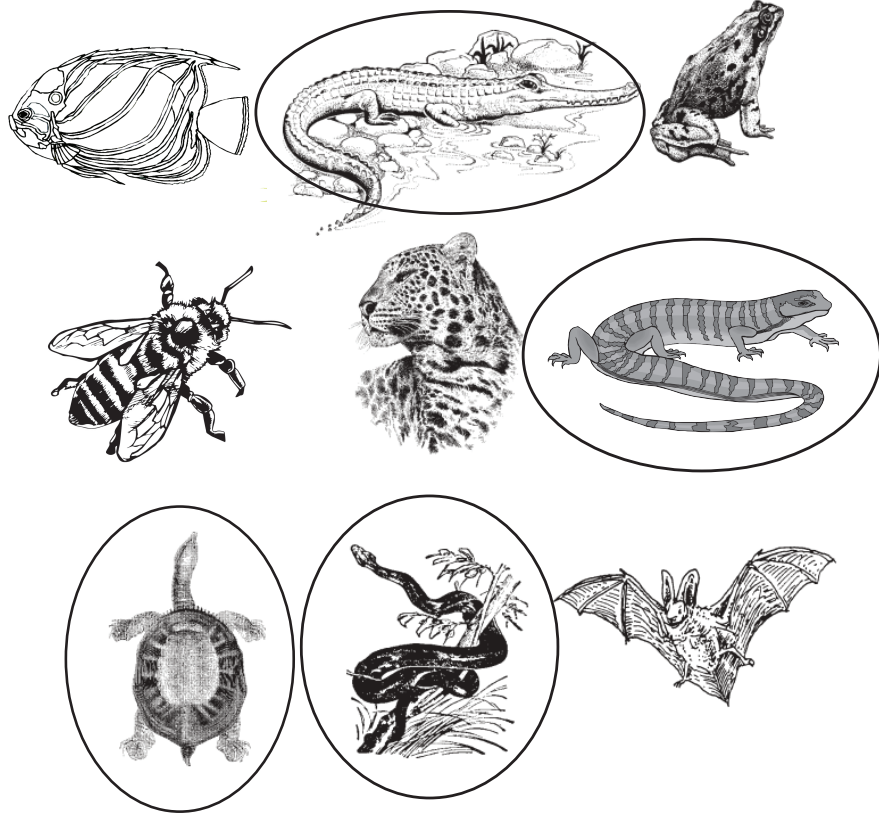
- Some lizard species don't have limbs.
- Some turtle species lay their eggs in riverbanks, and they will only hatch when they are submerged in water.
- Crocodiles have visible teeth when their jaws are closed. Alligators do not have any visible teeth when their jaws are closed.



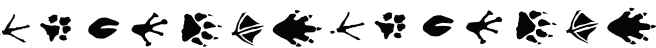
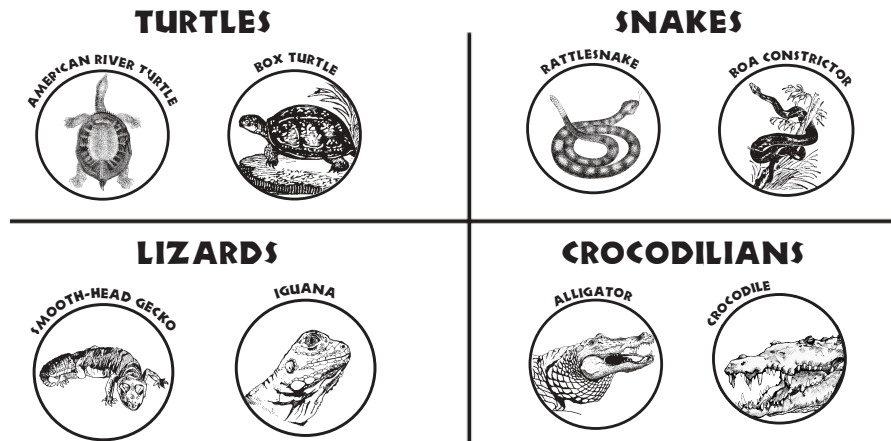
# WHAT IS A REPTILE?

Activity 1 & 2: Answer Keys

## ACTIVITY 1



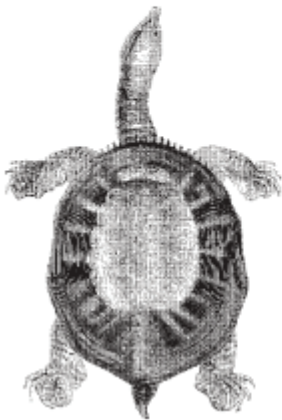
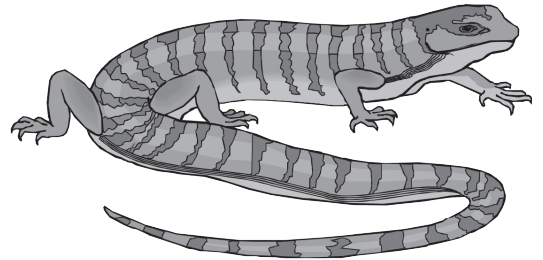
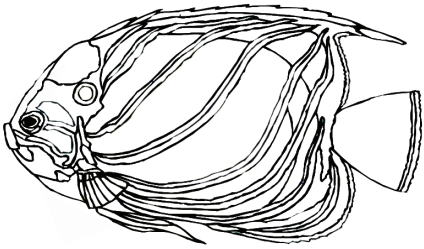
## ACTIVITY 2



# WHAT IS A REPTILE?

Activity 1: Look at the pictures of the animals below. Circle the reptiles.

Name \_\_\_\_\_





# CLASSIFYING REPTILES



Activity 2: Glue pictures of reptiles in the correct categories below.

Name \_\_\_\_\_

**TURTLES**

**SNAKES**

**LIZARDS**

**CROCODILIANS**





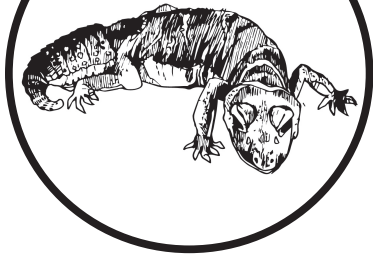
# CLASSIFYING REPTILES



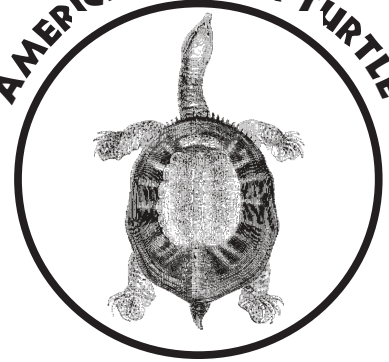
Activity 2: Cut out the reptiles below. Glue them in the correct box on the "Classifying Reptiles" chart.

Name \_\_\_\_\_

SMOOTH-HEAD GECKO



AMERICAN RIVER TURTLE



RATTLESNAKE



ALLIGATOR



IGUANA



BOX TURTLE



BOA CONSTRICTOR



CROCODILE

